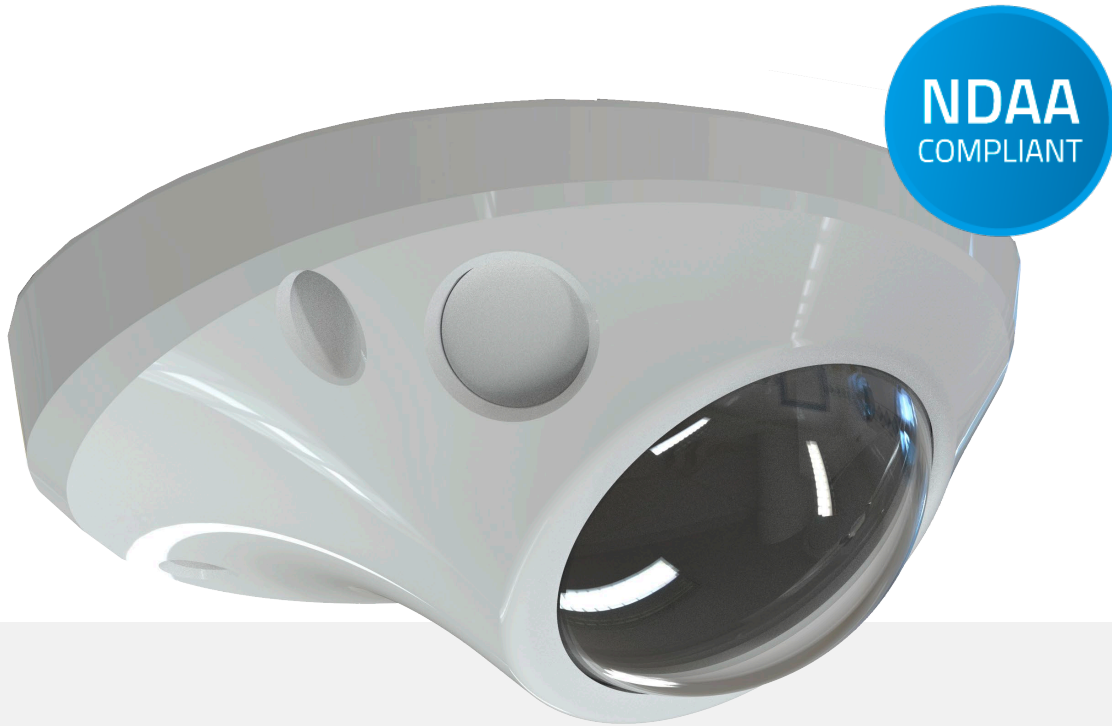


# ROADRUNNER™ HD CAMERA, INTERIOR DOME

ON-BOARD VIDEO SECURITY SYSTEM



## FEATURES

- Full HD (1080p) Resolution
- Vandal and Impact Resistant
- Optional Built-in Microphone
- IR Illumination Supports  
Low-light Recording

## AUTO-CONNECT POE, IP CAMERA

Specifically designed and manufactured for transit applications, RoadRunner HD cameras are auto-connecting, resulting in simple installation and maintenance - programming and IP configuration is automatic.

## RUGGED AND RELIABLE

Providing the highest quality recording in a rugged and vandal-resistant enclosure, the RoadRunner HD interior dome is designed for optimal viewing and flexibility for all types of transit vehicles.

# ROADRUNNER™ HD CAMERA, INTERIOR DOME

## TECHNICAL DATA

Order Information	
Order Number North America	RR-HDCDIRA85 (Audio Model with Microphone) RR-HDCDIR85 RR-HDCDIRA100 (Audio Model with Microphone) RR-HDCDIR100 RR-HDCDIRA115 (Audio Model with Microphone) RR-HDCDIR115
Electrical Properties	
Operating Voltage	48 VDC
Power Consumption	8.9 W Max
Interfaces	
Ethernet	1, 10/100 Mbps, RJ-45
Mechanical Properties	
Weight	0.36 kg, 0.79 lbs
Dimensions	104 mm x 122 mm x 49.6 mm x , 4.09" x 4.8" x 1.95"
Environment	
Operating Temperature	-30°C to 55°C, -22°F to 131°F
Storage Temperature	-40°C to 70°C, -40°F to 158°F
Ingress Protection	IP67
Impact Protection	IK10
Standards	
NDAA	✓
MIL-STD-810G	✓
FCC	✓
CE	✓

# ROADRUNNER™ HD CAMERA, INTERIOR DOME

## TECHNICAL DATA

<b>Image</b>	
Image Sensor	1/2.8" CMOS
Field of View	RR-HDCDIRA85/RR-HDCDIR85: 84.07° Horizontal; 45.35° Vertical RR-HDCDIRA100/RR-HDCDIR100: 101.3° Horizontal; 54.5° Vertical RR-HDCDIRA115/RR-HDCDIR115: 111.6° Horizontal; 61.45° Vertical
Resolution	FHD (1920x1080), HD (1280x720), nHD (640x360), CIF (352x240) 4:3 resolutions: 1440x1080, 960x720, 480x360, 272x240
Frame Rate	Maximum 30 fps
Scanning System	Progressive Scan
IR distance	10 m
Light Sensitivity Black/White	RR-HDCDIRA85/RR-HDCDIR85: B/W (IR OFF): 0.13 lux @F2.0, B/W (IR ON): 0 lux @F2.0 RR-HDCDIRA100/RR-HDCDIR100: B/W (IR OFF): 0.14 lux @F2.0, B/W (IR ON): 0 lux @F2.0 RR-HDCDIRA115/RR-HDCDIR115: B/W (IR OFF): 0.13 lux @F2.0B/W (IR ON): 0 lux @F2.0
Light Sensitivity Color	RR-HDCDIRA85/RR-HDCDIR85: 0.13 lux @ F2.0 RR-HDCDIRA100/RR-HDCDIR100: 0.14 lux @ F2.0 RR-HDCDIRA115/RR-HDCDIR115: 0.13 lux @ F2.0
Signal-To-Noise Ratio	>45 dB
Dynamic Range	120 dB
<b>Video</b>	
Video Compression	H.264, H.265, M-JPEG
Video Output Signal	CVBS, 1 Vp-p
<b>Audio (RR-HDCDIRA115, RR-HDCDIRA100, RR-HDCDIRA85)</b>	
Audio Input	1 Built-in Microphone
Audio Compression	ADPCM 16KHz, G.726, G.711 $\mu$ - Law, G.711 a - Law
<b>Mechanics</b>	
Camera Angle Adjustment	Pan: $\pm 5^\circ$ , Tilt: $20^\circ$ to $75^\circ$
Lens	RR-HDCDIRA85/RR-HDCDIR85: 2.8 mm RR-HDCDIRA100/RR-HDCDIR100: 3.3 mm RR-HDCDIRA115/RR-HDCDIR115: 4.0 mm