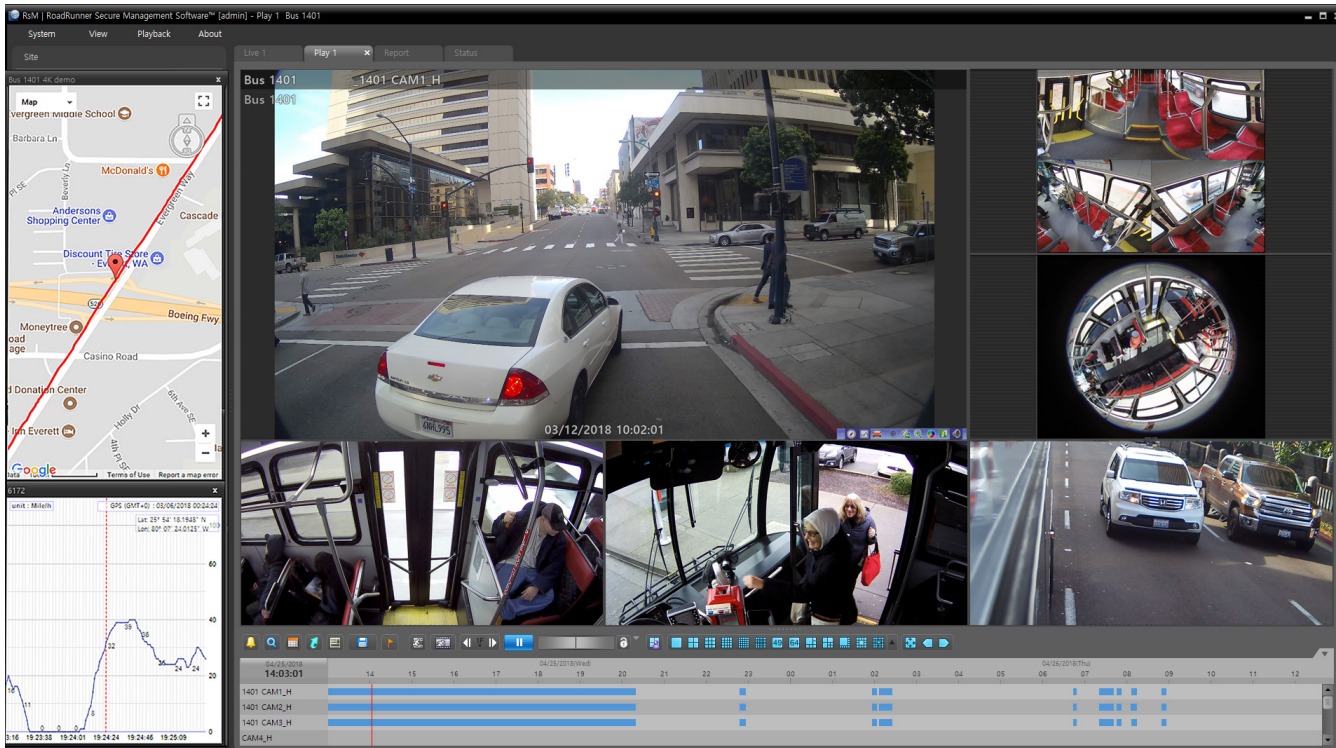


ROADRUNNER 4K™

ON-BOARD VIDEO SECURITY SYSTEM



FEATURES

- Supports up to 16 IP PoE or analog cameras and up to 18 audio inputs
- Records up to 480 images per second (ips) at 4K resolution, and an additional 480 ips at 720p (HD) resolution
- Months of on-board recording with removable storage, up to 10TB
- Optimal network performance with H.265 compression and wireless-ready for any TCP/IP based network
- Fully compatible with mSET (Managing Safety and Efficiency in Transit) Software for fleet-wide management, advanced chain of custody reporting, health monitoring and more

UNPRECEDENTED VIDEO QUALITY

The RoadRunner 4K system delivers the clearest, highest quality video, supporting advanced analytics. Excellent zoom capabilities capture license plates and other details with exceptional clarity.

SUPERIOR FLEXIBILITY

Supporting complete fleets of all vehicle types, the system is available in several compatible and interchangeable formats for recording 4K video from 4, 8, 12, or 16 IP cameras.

RUGGED AND RELIABLE

Designed and manufactured specifically for transit applications, the RoadRunner Recorder is Mil-Spec and SAE rated for proven durability and reliability in harsh mobile applications.

ROADRUNNER 4K

ON-BOARD VIDEO SECURITY SYSTEM

Intuitive and easy-to-use software provides full management of mixed fleets, live video streaming, health information and more.

SECURE ADMINISTRATION

Included with the RoadRunner system is software to support seamless administration, configuration, health information, remote viewing and archiving of secure video clips.

RoadRunner Secure Management (RsM) Software supports all RoadRunner Recorders and features:

- Interactive map-based search tools with historical location and speed data
- All functions are password protected with adjustable access-rights for up to 256 users and 64 groups
- Adjustable display and multi-screen support allows for customizable viewing panes and selection of 'favorites' for easy access
- Access for unlimited users and lifetimes updates are provided at no additional charge

FLEET-WIDE MANAGEMENT

Optional mSET™ Software provides all the information and tools required to proactively manage on-board video systems. Streamlining data from multiple generations of RoadRunner on-board video security systems, mSET provides enhanced tools to automatically and on-demand download and archive video, supply advanced video streaming capabilities, optimize system health and maintenance, improve operator performance, enhance safety, and mitigate risks.

Building upon years of experience and feedback from transit bus and rail agencies around the globe, mSET is a multi-functional application that features an innovative, browser-based user interface that is designed to increase accessibility of video and data through transit operations.

The screenshot displays the mSET software interface. On the left is a sidebar menu with options: Dashboard, Clips, Operators, Coaches, and Trends. The main area shows a video player with a white car at an intersection. Above the video, it says 'Custom OP on 09/14/2018 11:09AM' and 'Operator 115: LNAME, FNAME'. The right-hand panel is divided into sections: 'Info' (Site Name: Depot 44, Date & Time: 09/14/2018 11:09AM, Trigger Type: Custom OP, Operator ID/Name: 115 / 15234, Video Clip ID: 15234), '+ Tags' (ASSIGN, IGNORE, PRESERVE), 'Notes' (Operator does not position turn properly, resulting in a curb check, then operates vehicle with one hand off wheel. Created by admin), 'Observations' (Unsafe Turn - Positioning/Setup, Curb Check/Jumped Curb, Driving with One Hand Off Wheel), and buttons for 'PLACE OBSERVATION', 'COMPLETE COACHING', and 'CHAIN OF CUSTODY'. The video player shows a timestamp of 09-14-2018 11:09:07:28 and a progress bar.

DUAL RECORDING PROVIDES THE PERFECT BALANCE OF VIDEO QUALITY AND LONG-TERM STORAGE

High quality 4K and 720p video streams are recorded simultaneously, ensuring the highest quality video is available for review of critical incidents while maintaining the longest onboard recording duration. Storage is completely adjustable and customizable to your recording needs — the system automatically calculates estimated storage for both high quality and long-term recording streams.



RoadRunner 4K Recorder

SECURE VIDEO EVIDENCE

- Video is encrypted to ensure authenticity
- Password protection can be applied to individual video clips to ensure secure transfer to third parties
- Embedded player provides secure and efficient review of video without the need to download any software or players
- Enhance the chain of custody with the optional mSET Software, to track all actions associated with each video clip

ROADRUNNER 4K

ON-BOARD VIDEO SECURITY SYSTEM

Customize a system to best fit each vehicle type in your fleet - a variety of options and accessories are available to support virtually any mobile application.

ROADRUNNER 4K AND FULL HD CAMERAS

RoadRunner system cameras are specifically designed and manufactured for transit applications. All cameras are auto-connecting, plug and play, resulting in simple installation and maintenance - programming and IP configuration is automatic.

360° CAMERA

5MP resolution and a wider field of view maximizes coverage and eliminates blind spots. The 360 degree camera also features IR illumination and audio recording.

4K FORWARD-FACING

Optimized for installation at the front windshield, the 4K forward-facing camera records the driver's perspective and all details in front of the vehicle, including license plate numbers.

HD INTERIOR DOMES

Providing optimal views from various mounting locations, interior domes are vandal-resistant and feature 1080p resolution. Interior cameras are also equipped with IR illumination to record high quality video in low-light conditions and feature built-in microphones for audio recording.

HD EXTERIOR CAMERAS

Available in several models to best capture the exterior views on virtually any transit vehicle, our exterior dome and wedge cameras feature 1080p resolution, are IP66 rated and vandal-resistant.





BACK UP POWER OPTIONS PROVIDE ADDITIONAL DATA PROTECTION

Uninterruptible Power Supplies (UPS) are available with battery back-up to provide up to 15 minutes of recording time after power loss.

A back-up power system using supercapacitors is low-maintenance and provides one to two minutes of additional recording time after a power loss.

The Power Loss Data Protector provides an efficient alternative to a UPS, ensuring video is written to the disk, even in the event of a direct impact.

ALL-IN-ONE SOLUTION FOR PASSENGER AWARENESS, INFORMATION AND ADVERTISING

The RoadRunner system is fully compatible with INFOtransit systems - displaying live video feeds that promote a more secure and safe environment for riders and operators, while simultaneously providing passenger information. Additional information can be added to the data feed, including service alerts, public service announcements, and even revenue-generating advertisements.

OPERATOR AND INDIVIDUAL DISPLAYS

An operator display can be added for the driver to show the back-up camera while the vehicle is in reverse. Or add passenger awareness displays throughout the vehicle to display the live video feed. Monitors are available in sizes ranging from 8 to 19 inches to fit a variety of uses and vehicle types.

A robust solution to enhance safety and security,
designed to increase efficiency of transit operations.

ROADRUNNER 4K

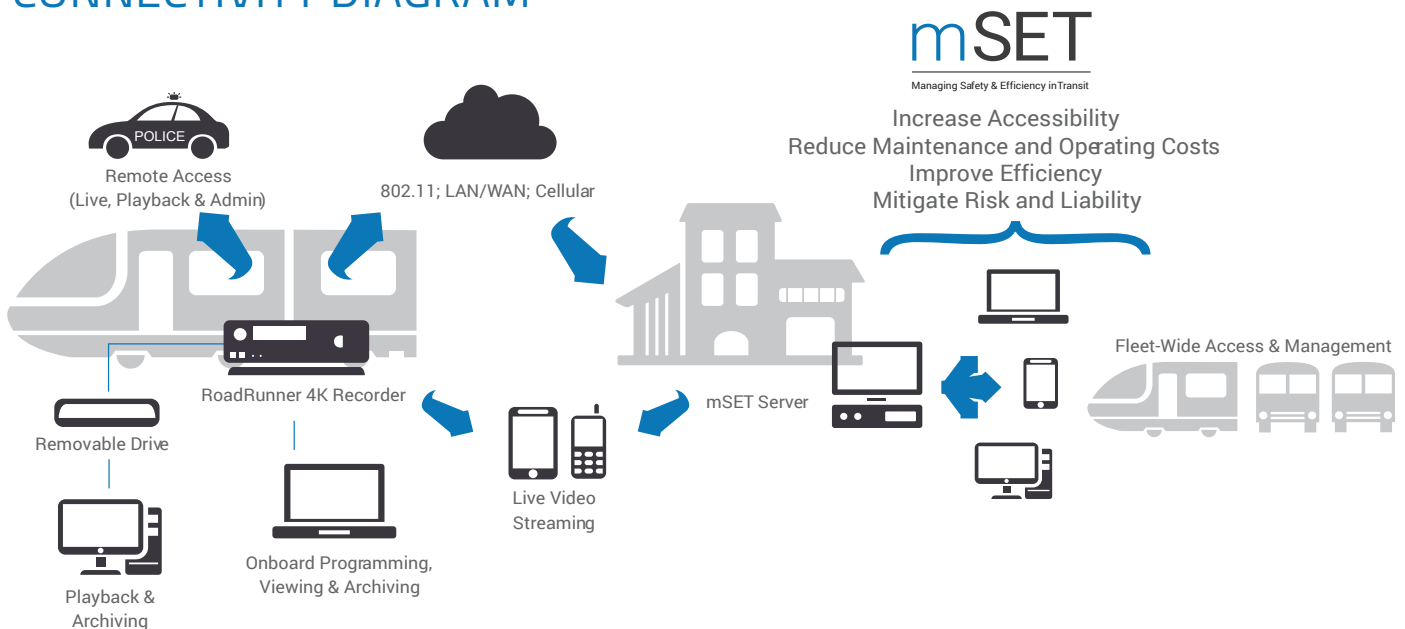
ON-BOARD VIDEO SECURITY SYSTEM

CONNECTIVITY OPTIONS

- Add the embedded 802.11ac modem for low-cost and efficient access to the Recorder and the ability to download video over Wi-Fi. The high powered 5GHz 2x2 MIMO model also includes a 3-in-1 antenna with GPS
- Ideal for live video streaming, optional ruggedized cellular routers feature 802.11ac and 5-in-1 antennas for easy connectivity and installation. Cloud management makes for simple deployment, monitoring, and fleet-wide updates.

INTELLIGENCE, SAFETY AND EFFICIENCY IN TRANSIT

CONNECTIVITY DIAGRAM



Features and Specifications are Subject to Change without Notice BOVS2002R01