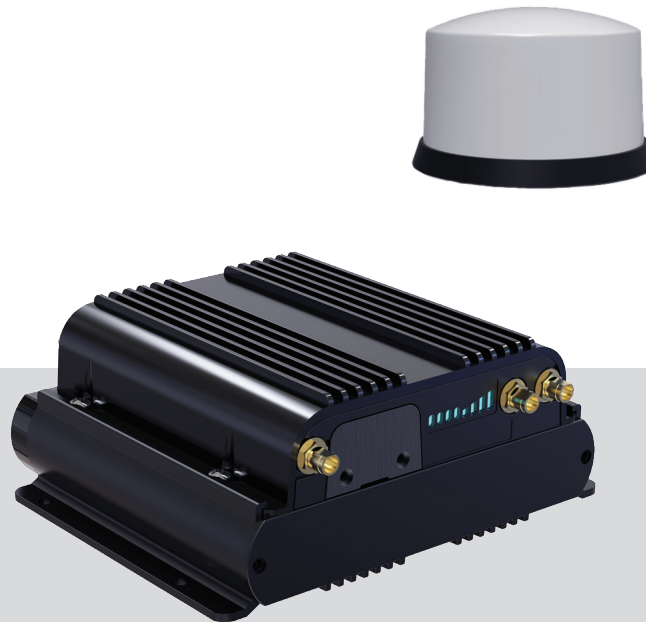


# ROADRUNNER™ CELLULAR ROUTER

## ON-BOARD VIDEO SECURITY SYSTEM



### FEATURES

- LTE-Advanced Modem (600Mbps throughput) Enables Live Streaming of Higher Resolution Video over a Cellular Network
- Cellular Modem Dock for Dual Modem Functionality or Future Upgradeability
- Enterprise Class Routing and Security in Mobile Applications
- Dual-band Wi-Fi (2.4/5GHz) and Dual SIM with Auto-Carrier Switching for Robust Network Cellular Coverage
- Includes Multiband 5-in-1 Cell/Wi-Fi/GPS Roof Mount Antenna

### EASILY MANAGED

The RoadRunner WC340 Router features web-based management software that is user-friendly and supports local and remote access. Backup is easily configurable to protect data.

### RUGGED AND RELIABLE

Manufactured specifically for harsh, mobile environments, the WC340 features a compact, rugged design and is MIL-Spec 810G and SAE J1455 rated for impact, shock, vibration and temperature extremes.

# ROADRUNNER™ CELLULAR ROUTER

## ON-BOARD VIDEO SECURITY SYSTEM

### TECHNICAL DATA

Product Ordering Information	
Part/Model Number (N. America)	RR-HDWC340 (RoadRunner HD/4K) RR-WC340 (RoadRunner AHD)
Electrical Properties	
Operating Voltage	9-33 VDC
Power Consumption	5 W (Typical) to 18 W (Max)
Interfaces	
Ethernet	2, LAN/WAN Switchable 10/100/1000 Gigabit Ethernet Ports- 1 Default WAN 2, 10/100 Ethernet Port (Modem Expansion Dock)
USB	1, USB 2.0
Mechanical Properties	
Dimensions	146.05 mm x 57.15 mm x 120.65 mm, 5.75 in x 2.25 in x 4.75 in
Weight	0.4 kg, 0.875 lbs
Environment	
Operating Temperature	-30°C to 70°C, -22°F to 158°F
Relative Humidity	5% - 95% (Non-Condensing)
Ingress Protection	IP54 Router, IP67 Antenna
Standards	
ISO 7637-2	✓
SAE J1455	✓
MIL-Spec 810G	✓
Approvals	
FCC	✓
CE	✓
Cellular Interface	
	Embedded LTE-Advanced 600 Mbps Modem & DC-HSPA+ Fallback
Carriers	
	All North American Carriers, European, Asia Pacific & Saudi Arabia Operators
Wi-Fi Interfaces	
	802.11a/b/g/n/ac (WAVE 2); 2x2 MIMO Access Point/Client/WWAN LAN and WAN Interface (AP + Client) WPS, WDS, WMM; Two Isolated SSIDs WPA, WPA2, WPA-PSK, WEP 64/128-bit, 802.1x Security
Inputs/Outputs	
	2, 10/100 Mbps Ethernet LAN Ports 2, 10/100/1000 Mbps Ethernet Switchable LAN/WAN Ports 2, RP-SMA Female Wi-Fi Antenna Connectors 1, SMA Female GPS Antenna Connector 2, SMA Female Cellular Antenna Connectors 2, Full Size (1FF) SIM Card Slots 1, User-Accessible USB 2.0 for 3G/4G Modems 1, 4-pin Microfit Power Jack

# ROADRUNNER™ CELLULAR ROUTER

## ON-BOARD VIDEO SECURITY SYSTEM

### TECHNICAL DATA

WAN Management	<ul style="list-style-type: none"><li>Auto Fail Over Routing Between Ethernet and Wi-Fi Interfaces (User Selectable Routing Priority)</li><li>Auto-Connect on Demand, or Stay Connected 24/7 with "Always-on" Feature</li><li>ICMP Heartbeat (Ping Continuity) Monitor to Ensure Persistent Cellular Connections</li><li>Configurable Load Balancing Between WAN Interfaces</li><li>MAC Address Access Control List</li><li>Bandwidth Utilization / Bandwidth Throttling Controls</li><li>Cradlepoint - Enterprise Cloud Manager™</li><li>Web UI, API, CLI</li><li>SNMP</li><li>SMS Control Serial</li><li>Redirector</li><li>Syslog</li><li>2.4/5GHz Wi-Fi-as-WAN / Client Mode</li></ul>
VPN & Routing	<ul style="list-style-type: none"><li>VPN over 3G/4G and Ethernet Interfaces IPSec Server and Client Modes</li><li>DES, 3DES AES Encryption</li><li>SHA1/MD5 VPN Authentication</li><li>Dead Peer Detection (DPD)</li><li>Router Initiated/Terminated IPSec VPNs and Client Pass-Through VPN Support</li><li>IPSec NAT Traversal + Keep-Alive Packet Support</li><li>Inter-Operable with Standard IPSec-Based VPN Products (e.g. Cisco, SonicWall, Juniper, WatchGuard, NetScreen, etc.)</li><li>PPTP Server and Client Modes (32 Simultaneous Clients)</li><li>MS-CHAPv2 &amp; MPPE 128 Bit Security</li><li>IPsec Tunnel – Up to 10 Concurrent Sessions</li><li>L2TP</li><li>GRE Tunnel OSPF/BGP/RIP</li><li>Route Filters (Access Control Lists, Prefix Filters, Route Maps, Communities for BGP)</li><li>Pre-Interface Routing NAT-less Routing</li><li>Virtual Server/Port Forwarding</li><li>NEMO/DMNR</li><li>IPv6, VRRP, STP, NHRP</li><li>VTI Tunnel Support</li><li>OpenVPN Support</li><li>CP Secure VPN Compatible Serial PAD Mode</li></ul>
Firewall	<ul style="list-style-type: none"><li>Stateful Packet Inspection (SPI) Firewall</li><li>Anti-DoS and Anti-Spoofing Protection</li><li>L2 / L3 / L4 ACL Filtering</li><li>Static DHCP and Static ARP IP-MAC Binding</li><li>DMZ and Port Forwarding (Virtual Server)</li><li>RADIUS and TACACS+ Support, 802.1x Authentication</li><li>Certificate Support</li><li>ALGs</li><li>MAC Address Filtering</li><li>Zone-Based Object Firewall with Host Address (IP or FQDN), Port, and Mac Address</li></ul>

# ROADRUNNER™ CELLULAR ROUTER

## ON-BOARD VIDEO SECURITY SYSTEM

### TECHNICAL DATA

IP and Routing	LAN DHCP Server, Cache, Proxy Server, and Relay WAN DHCP, Static IP, PPPoE, Wi-Fi Client WAN Fail-Over Detection Limits and Controls WAN Load Balancing (Ethernet + USB) Static Routing L3/L4 IP/Port Policy-Based Routing Port-Forwarding and Port-Translation VLAN Support Spanning Tree Protocol Support Dynamic DNS (DynDNS, NoIP, TZO, etc.) Permanent DNS Address Bandwidth Management and Throughput Optimization Content Filtering (OpenDNS), NTP Time Service Support
Device Management	Web-Based Management (Local and Remote) Tablet-Friendly GUI Configuration Backup and Restore Firmware Upgrde and Downgrade SNMP Support Syslog Support Real-Time Login Scheduled System Restarts Ping, ARPing, and Trace-Route Utilities